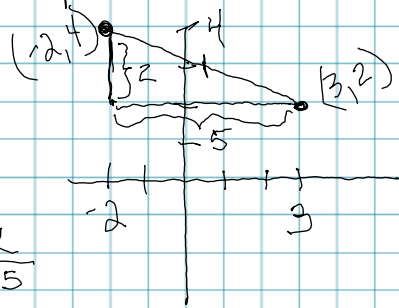


I can find slope, midpoint & distance
given 2 points.

$(-2, 4)$ AND $(3, 2)$



$$m = \text{slope} = \frac{\text{rise}}{\text{run}} = \frac{4-2}{-2-3} = \frac{2}{-5}$$

$$\boxed{\frac{-2}{5}}$$

$$\text{midpoint} = \frac{y+y}{2} = \frac{4+2}{2} = \frac{6}{2} = 3$$

$$\frac{x+x}{2} = \frac{-2+3}{2} = \frac{1}{2}$$

$$\boxed{\left(\frac{1}{2}, 3\right)}$$

$$\begin{aligned} \text{distance} &= \sqrt{(x-x)^2 + (y-y)^2} \\ &= \sqrt{(4-2)^2 + (-2-3)^2} \\ &= \sqrt{(2)^2 + (-5)^2} \\ &= \sqrt{4 + 25} \\ &= \boxed{\sqrt{29}} \end{aligned}$$