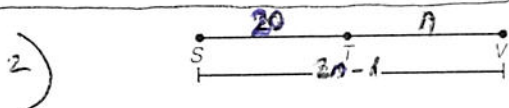
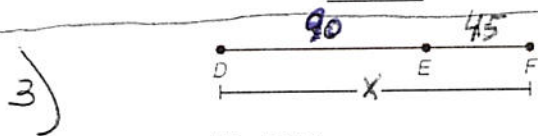


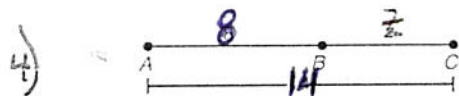
Find JK. _____



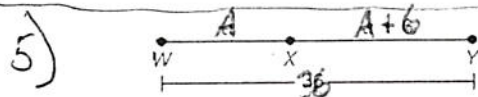
Find SV. _____



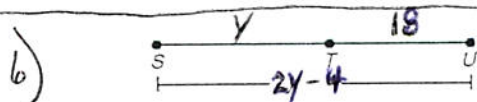
Find DF. _____



Find BC. _____

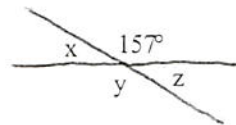


Find XY. _____



Find ST. _____

11. Find the measures of angles x , y , and z in the figure.

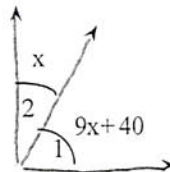


The measure of angle x is °.

The measure of angle y is °.

The measure of angle z is °.

12. The angles shown are complementary angles. Determine the measures of $\angle 1$ and $\angle 2$.

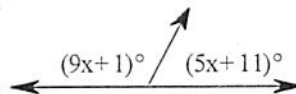


What are the measures of $\angle 1$ and $\angle 2$?

$m\angle 1 =$ ° (Simplify your answer.)

$m\angle 2 =$ ° (Simplify your answer.)

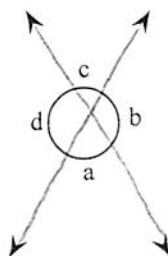
13. Find the measure of each marked angle.



The larger angle measures °.

The smaller angle measures °.

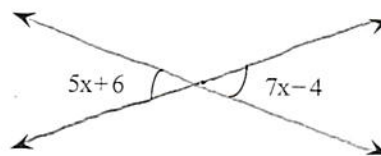
14. Use the figure to the right to answer the following exercise.



$\angle a + \angle b = ?$

$\angle a + \angle b =$ °

15. Find x .



$x =$