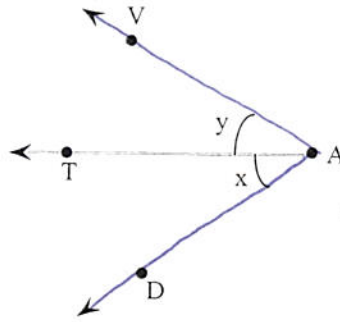


1.

State two other ways to name $\angle x$.



Two other ways to name $\angle x$ are angles .
 (Use a comma to separate answers as needed.)

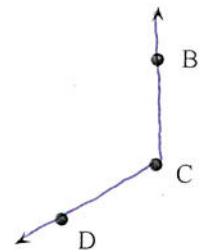
2. Decide whether the following statement is true or false.

"Obtuse angles are always more than 180° ."

Is the statement true or false?

- False
- True

3. Identify the figure as a line, a ray, a line segment, or an angle. Then name the figure using the given points.



a line

The given figure is a ray

a line segment

an angle

Name the given figure. Select the correct choice and then fill in the box to complete your answer.

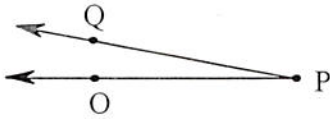
A.

B.

C.

D.

5.



Determine an inappropriate name for the angle.

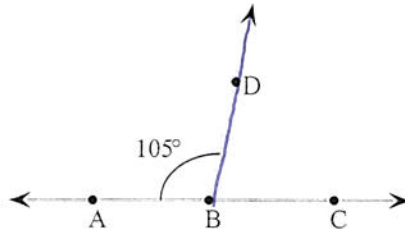
Which of the following is NOT an appropriate name for the angle?

- A. angle OPQ
- B. $\angle OPQ$
- C. $\angle QPO$
- D. $\angle QOP$
- E. $\angle P$

6.

Use the figure to the right to answer the following exercise.

What is $\angle ABC$ called?



Choose the correct answer below.

- an obtuse angle
- an acute angle
- a straight angle