



Geometry

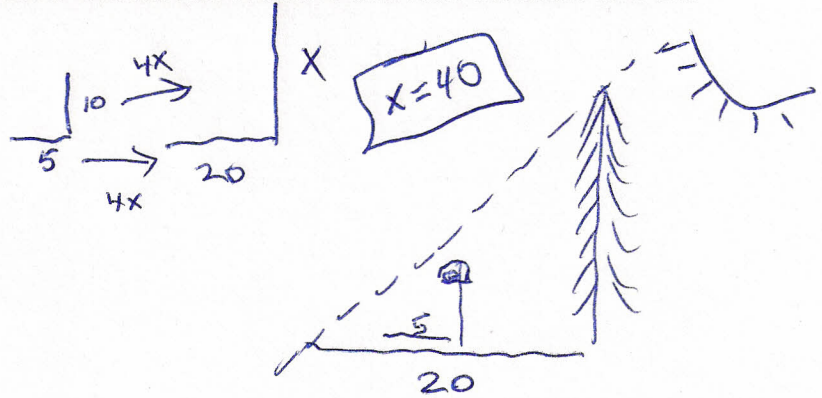
Unit 4—ratio & proportions

Day 1—entry task

Name: _____

Period: _____

On a sunny day a basketball hoop (10 feet tall) casts a shadow of 5 feet. A tree next to the basketball court casts a shadow of 20 feet. Sketch this scenario and then calculate how tall the tree is:



~~$$\frac{6}{20} = \frac{15}{x}$$~~

$$\frac{6x}{6} = \frac{300}{6}$$

$$x = 50$$



Geometry

Unit 4—ratio & proportions

Day 1—entry task

Name: _____

Period: _____

On a sunny day a basketball hoop (10 feet tall) casts a shadow of 5 feet. A tree next to the basketball court casts a shadow of 20 feet. Sketch this scenario and then calculate how tall the tree is:

$$\frac{6}{20} = \frac{15}{x}$$