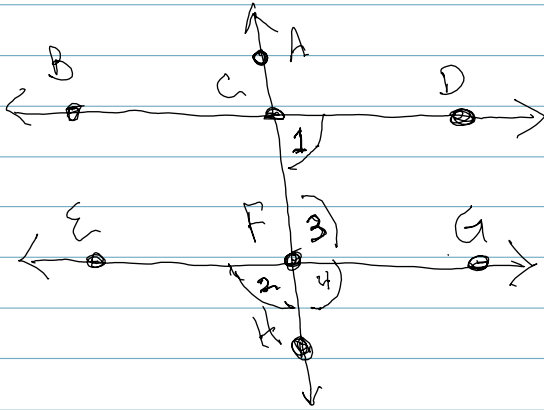


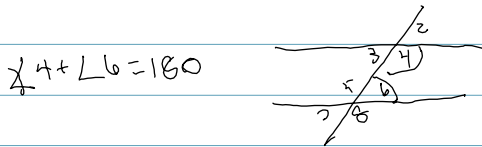
Day 11 - Use Vocabulary to show lines are parallel



given \rightarrow
 - \overline{BD} and \overline{EG}
 are cut by a transversal \overline{AH}
 - $\angle 1 + \angle 2$ are supplementary

using the givens informational can you use the vocabulary for parallel lines to prove that $BD \parallel EG$?

way 1: Think about same interior angles = 180



step 1: $\angle 2 = \angle 3$ ($\angle CFG$) vert. \angle rule

step 2: $\angle 1 + \angle 3 = 180^\circ$ same side interior angles

step 3: $\angle 1 + \angle 2 = 180^\circ$ which was given

step 4: so we can conclude the lines $BD \parallel EG$!

way 2: think about corresponding angles

step 1: $\angle 1 = \angle 4$ corresponding \angle 's
 $\angle 2 + \angle 4$ make up supplementary angles (180°)

step 2: $\angle 1 + \angle 2 = 180$ given

step 3: so we can conclude the lines $BD \parallel EG$!